

# Solidarity with Mayotte 3 months of action

MARCH 2025





## «Three months after the disaster, the situation remains very concerning»

**Karine Meaux, Head of Fondation de France's Emergencies department, looks at the current situation in Mayotte and Fondation de France's priorities in the hard-hit territory.**

### What is the situation in Mayotte today?

Three months after the disaster, the situation in Mayotte remains very concerning. Despite the measures put in place, particularly by the associations we support, difficulties persist, particularly in the distribution of basic necessities (water, food). Another major challenge is to give residents a clear idea of the assistance available and the waiting times. While the health crisis linked to the lack of drinking water has been avoided thanks to close monitoring by the public authorities, the social climate remains tense.

### What are Fondation de France's priorities after three months of initiatives?

Fondation de France remains fully mobilised in the field. Three missions have already been carried out, in close collaboration with our partner associations. Our priority remains meeting basic needs, as well as providing medical and psychological support for the population. We also support associations that provide educational, social and cultural activities for children. Last month, we visited the area to launch pilot projects aimed at making vulnerable housing safer, preventing the risk of landslides and helping residents to repair their

homes. We are committed to sustainable and ecological reconstruction, in cooperation with the public sector. To help revive this activity, we are supporting several farmers' associations to finance the purchase of seeds and tools, in order to bolster food security in the region. At the same time, we have initiated discussions to support environmental initiatives (cleaning up rivers and forests, replanting mangroves, etc.) in order to preserve the biodiversity that is vital to the region.

### How do the various actors involved work together?

One of the main challenges remains coordination and close collaboration with local associations, businesses, local authorities and government departments to provide an effective, concerted response to emergency issues and the sustainable recovery of the area. We are doing our utmost to develop dialogue between all the actors involved. Our committee is paying particular attention to this. Consisting of emergency experts and specialists in a variety of complementary fields, the committee meets every week to ensure optimal responsiveness, and pays particular attention to how the funds raised are used.

### Members of the Solidarity for Mayotte committee

#### CHAIRMAN

##### **Dominique Boyer**

Former national education inspector in Saint-Martin.

#### MEMBERS

##### **François Auroux**

Hydrological engineer, legal expert, volunteer with the association Hydrauliques sans Frontières and the Geotec Foundation.

##### **Jacques Desproges**

Forestry engineer, founder of the Terra consultancy, former chairman of Emmaüs Défi and member of Convergences France.

##### **Clémentine Lehuger**

Doctorate in political science from the University of Paris I Panthéon-Sorbonne, specialist in Mayotte.

##### **Aurélien Lopes**

Overseas representative for the Agence Qualité Construction association, expert in housing and reconstruction issues.

##### **Annabelle Moatty**

Research officer at the CNRS, scientific expert on post-natural disaster contexts, Member of the Crisis and Disaster Prevention Committee at Fondation de France.

##### **Aude Sturma**

Associate sociologist researcher at the Centre for Study and Research on Work, Organisation and Power (CERTOP), specialising in water, the environment, health and crises, and Mayotte.

##### **Valérie Thomas**

Medical director of the Samu Social of Paris, expert on emergencies and violence against women in Mayotte.

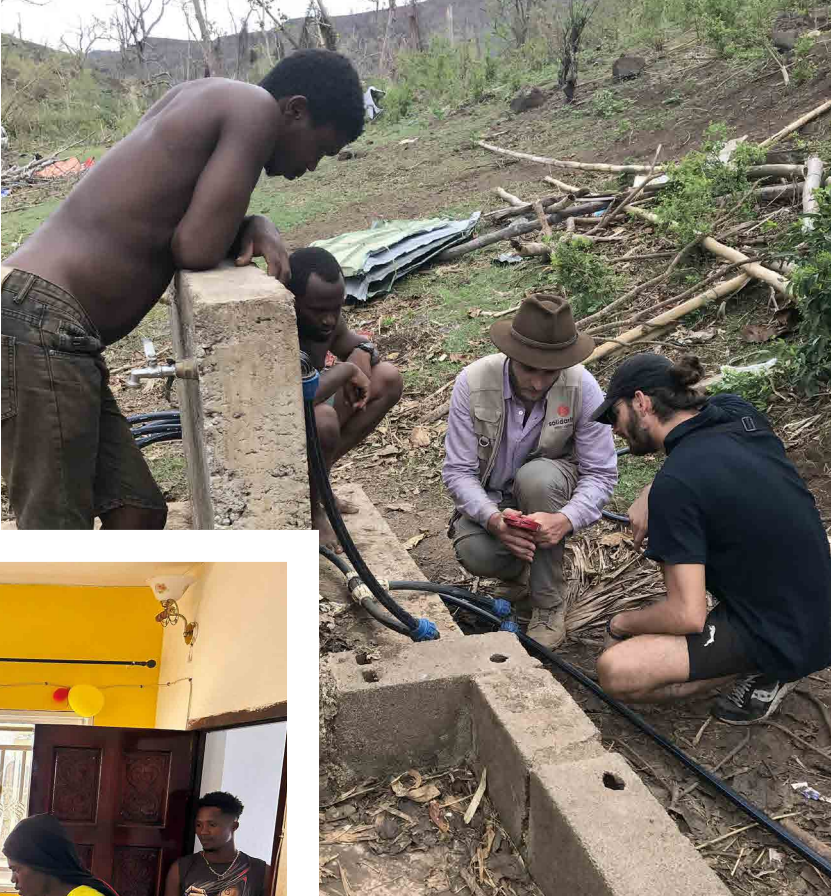
##### **Jean-Pierre Troche**

Urban planner and architect, chairman of the Housing committee of Fondation de France.

##### **Ben Amar Zeghadi**

National Delegate for Overseas Territories at ESS France, PhD student in Business Administration, member of the Higher Council for Social and Solidarity Economy.

Rehabilitation of existing water points in the Kwale bangas by Solidarités International technical teams.



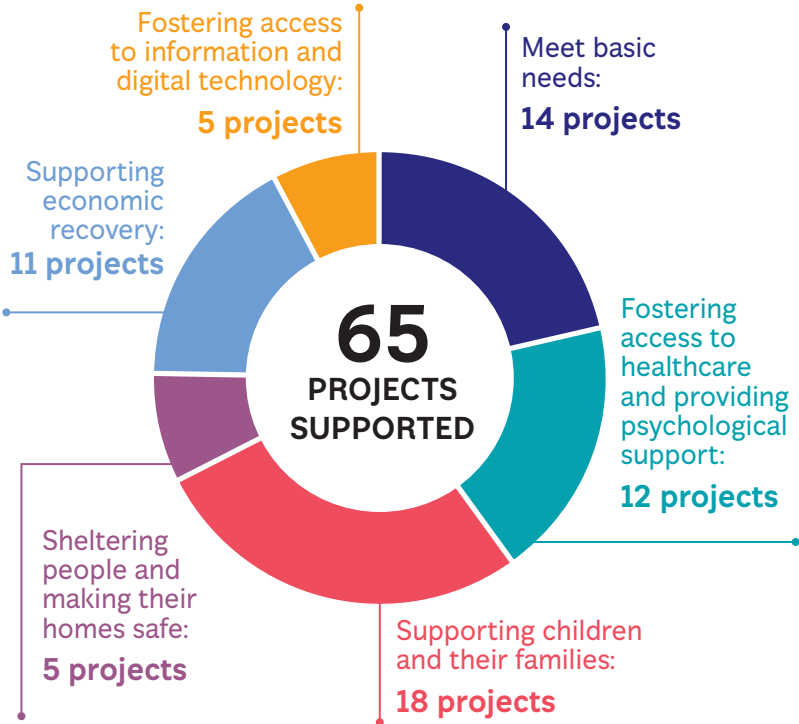
Meals prepared by local restaurant owners with the support of the NGO World Kitchen and distributed by the Régie de Territoire association in Tsingoni.

Key figures as  
at 28 February 2025

338 000  
DONATIONS

€42,7  
million  
RAISED

€6,2 million  
committed



## Initiatives supported in Mayotte

Le 14 décembre dernier, un cyclone d'une ampleur exceptionnelle dévastait l'archipel de Mayotte. Déjà impliquée à Mayotte dans des actions de préparation aux catastrophes, la Fondation de France s'est immédiatement mobilisée en prenant contact avec ses partenaires associatifs dans la région de l'Océan Indien pour lancer les premières actions d'urgence. L'appel à don a permis de collecter 42 millions d'euros. Depuis trois mois, 6,2 millions d'euros ont déjà été consacrés au déploiement de 65 actions au sein de l'archipel sinistré.

### Meet basic needs

In response to the humanitarian emergency, Fondation de France continues to support local actors in carrying out essential actions: food aid, access to drinking water, distribution of hygiene kits, etc.

The **LEPAM** association (Luttons Ensemble pour un Avenir Meilleur à Mayotte), for example, distributes water, food, clothing and hygiene products in the La Vigie and Labattoir neighbourhoods of Petite-Terre, as well as home deliveries to isolated people who are unable to travel. The association also offers psychosocial and socio-professional support, as well as mentoring and tutoring sessions.

The **Yes We Can Nette** association has reopened its social grocery shop equipped with a laundry. It encourages residents to recycle their empty cans in exchange for discounts. It also distributes food vouchers and runs workshops on waste sorting and natural risk management.

In Petite Terre, the **SCH** association delivers parcels (food, clothing and hygiene products) to around 100 families in precarious situations who are unable to travel.

### Sheltering people and making their homes safe

Following the passage of the cyclone, a large proportion of the precarious housing, which represents 40% of housing on the archipelago, was completely destroyed. Faced with this unprecedented crisis, Fondation de France is supporting a number of actors working to make homes safer and more secure.

The organisations **Architectes de l'Urgence** and **CAUE** (Conseil d'Architecture, d'Urbanisme et de l'Environnement) have carried out an assessment of the damage to public and private buildings. The diagnosis shows that the destruction mainly affected the north, east and west of Grande-Terre, with a major impact on light residential housing, particularly shanty towns. The CAUE is developing tools to help local residents with their enquiries and organises meetings in local communities to answer their technical, administrative and legal questions. Four new architect/legal expert teams are being deployed to provide advice on sustainable reconstruction.

*The NGO Architectes de l'Urgence is carrying out an assessment of the damage to public and private buildings in Mayotte.*





*The NGO Santé Sud responds to emergency health needs.*

## Facilitating access to healthcare and providing psychological support

To meet the need for health and psychological support, Fondation de France supports a number of associations that work with the most vulnerable people.

The NGO **Santé Sud** provides local health services throughout the Petite-Terre basin, reaching around 35,000 people. With its team of health professionals, it also develops epidemiological monitoring to prevent health risks.



*The Kaweni Nouvelle Aire association welcomes around 100 young people at its activity centre.*

The **Machaka Media Ana** association facilitates access to healthcare for people in very precarious situations. In Longoni, it organises transport for patients unable to get to hospital or pharmacies, delivers meals and water to the most isolated areas, and provides medical equipment for diabetics.

In Tsingoni, the **Autisme Mayotte** association has set up a day centre for autistic children and adults and their families. It offers appropriate educational and cultural activities and a parents' school designed to support families by providing them with spaces for dialogue and training. In the community garden it has set up, children and adults learn agricultural practices for therapeutic and economic purposes, sharing the harvest.



### **Sophie Lasserre, Head of Emergency Programmes at Fondation de France, travelled to Mayotte at the beginning of February to meet with associations and healthcare professionals:**

«Following Cyclone Chido, the health and mental health needs are considerable. The whole population is affected and it is crucial to provide support now to prevent long-term consequences. On site, professionals are mobilising to meet the scale of demand, setting up group activities and videoconferencing. Fondation de France supports associations such as Terrapsy, which runs discussion groups in schools and organises medical outreach services to help isolated people. It has also extended its support to the field hospital near Mamoudzou to ease the burden on the local hospital, which is overwhelmed by consultations. Our priority is to ensure access to basic healthcare and psychological care while looking after the teams on the ground, because it's hard to help others when you're in distress yourself. Physical and mental health is addressed as a cross-cutting issue in all our actions.»

## Supporting children and their families

Children are particularly hard hit by the consequences of the cyclone. To ensure these children continue to have access to education and to limit the number of gaps in their education, Fondation de France supports local associations that provide assistance for families, supply school equipment and toys, and organise educational, sporting, artistic and cultural activities.

In Kounkou and Mamoudzou, the **Kaweni Nouvelle Aire** association welcomes around 100 children and young people in very precarious circumstances at a day centre, where they benefit from lessons and educational activities. It also provides food aid and health advice in the most isolated neighbourhoods. With a view to promoting professional integration, the association also offers training in agricultural activities, enabling young people to specialise while providing local produce for their families.

**Mission Locale de Mayotte** provides support for over 1,000 young people aged 16 to 25, mainly from disadvantaged city neighbourhoods. Two buses cover rural areas. The association provides vocational guidance, administrative assistance and social support, as well as distributing basic necessities.

To meet the needs of children in the region, the Fédération des Familles Rurales de Mayotte is setting up


group childcare centres in seven communes. At the same time, it is training around 100 young people aged 16 to 30 for the BAFA (Certificate of Competence in Youth Leadership) to strengthen the teams on the ground.

## Supporting economic recovery, particularly in agriculture

As well as responding to immediate needs, Fondation de France is also supporting initiatives aimed at preparing for the reconstruction phase and relaunching economic activity, particularly in the agricultural sector.

A number of farming groups, specialising in market gardening, livestock farming and agroforestry, are cleaning up their land, purchasing seeds and plants, and replacing small equipment to restart planting before the end of the rainy season. These initiatives also benefit from technical support from the Mayotte Chamber of Agriculture (CAPAM) and the DAAF (Directorate of Food, Agriculture and Forestry of the Mayotte Prefecture).

Meanwhile, the **Initiative Mayotte** association supports the development of entrepreneurship and job creation. With the support of the Mayotte Departmental Council and Fondation de France, it has set up a fund to support small local entrepreneurs. The aim is to offer interest-free business loans (up to €20,000) to help get the local economy moving again quickly.

To learn more about our initiatives, visit [fondationdefrance.org](https://fondationdefrance.org) 

# Thank you

**We would like to thank all those who have worked alongside us:**

**Thank you to the hosted foundations** that support our initiatives: Fondation Actes 77 – Fondation Anaiak Txulapa – Fondation Ardian – Fondation Brico Dépôt – Fondation Carasso – Fondation Castorama – Fondation Concrete – Fondation Crédit Agricole Guadeloupe – Fondation Henriette Anne Doll – Fondation Heinrich et Nelly Feuerhahn – Fondation Renée et Joseph Grimaud – Fondation Yo & Ann-Marie Hamoud – Fondation Huileries Richard – Fondation Le Mascaret – Fondation Mustela – Fondation Présents – Fondation Proficio – Fondation Rexel – Fondation Setec – Fondation Sophie Rochas.

**Thank you to all the donors who are taking part in this solidarity movement.** We are moved and grateful for this vast outpouring of generosity.

**Thank you to the businesses, institutions and local authorities that have supported us:** AFNIC, Aroma-Zone, Association Comité Amis Emmaüs Le Puy, Association Le Liseron, Association Nour, Assolem, Atalian, Banque de France, Caisse des Dépôts, CAPSSA, Comité d'amis d'Emmaüs, Communauté d'agglomération du Bassin de Bourg, Communauté d'agglomération d'Aurillac, Conseil départemental d'Ille-et-Vilaine, DÉKUPLE, Fédération française de bridge, FNSA-ESH, Fondation d'entreprise Caisse d'Épargne Loire Centre, Fondation Paradis, Fonds de dotation de l'Interallié, Fonds de dotation SERFIM, Fonds L'Oréal pour l'urgence climatique, France Road, Grand Besançon Métropole (GBM), Groupe Colas, Groupe JLO, IPECA, Kiwanis Saint-Étienne, Le mécénat des mutuelles AXA, Mairie de Besançon, Matmut, Mennecy, Mutuex Union, REEL International, Servair-Group, SFIL, Syndicat des Médecins de la Drôme, UpCoop.

**We would also like to thank all our media partners** who broadcast our appeal for solidarity, including France TV, Radio France, le groupe TF1, le groupe M6-RTL et BFM.